



USAID
FROM THE AMERICAN PEOPLE



Building Capacity to Improve Health Commodity Management in Humanitarian and Disaster Settings



International Rescue Committee



International Medical Corps



BACKGROUND

Across the world, the nature of humanitarian crises is changing. Natural and man-made disasters have become more frequent and more severe in how they affect populations; they are longer lasting and more complex, making it harder for governments, communities, and partners to respond effectively. Recent crises at a global scale, such as the COVID-19 pandemic, are having long-term impacts on supply chains, which adds to these global pressures. In emergency settings, organizations involved in response have limited capacity to manage pharmaceutical and medical commodities (PMC), causing quality issues; inefficiencies in storage; and an increased risk of theft, expiry, damage, and waste. These challenges require models of support that are more nuanced and tailored, with better methods of satisfying demand to ensure that health products and services are delivered to people in need.

In coordination with USAID's Bureau for Humanitarian Assistance (BHA), JSI Research & Training Institute, Inc. (JSI) is implementing the Building Capacity to Improve Pharmaceutical and Medical Commodity Management in Humanitarian and Disaster Settings Program to address these challenges.

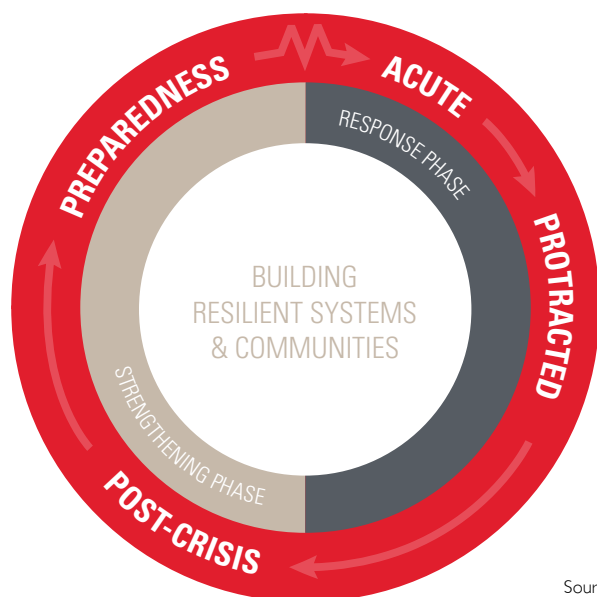
Since 2018, this series of projects has supported international and local nongovernmental organizations that work with USAID, enabling them to better manage PMC in humanitarian crisis settings. We equip the organizations with resources, guidance, training, and follow-up support, and these organizations and their staff, in turn, support partners, local organizations, communities, and health program managers in the field.

PROGRAM OBJECTIVES

The program focuses on four activities:

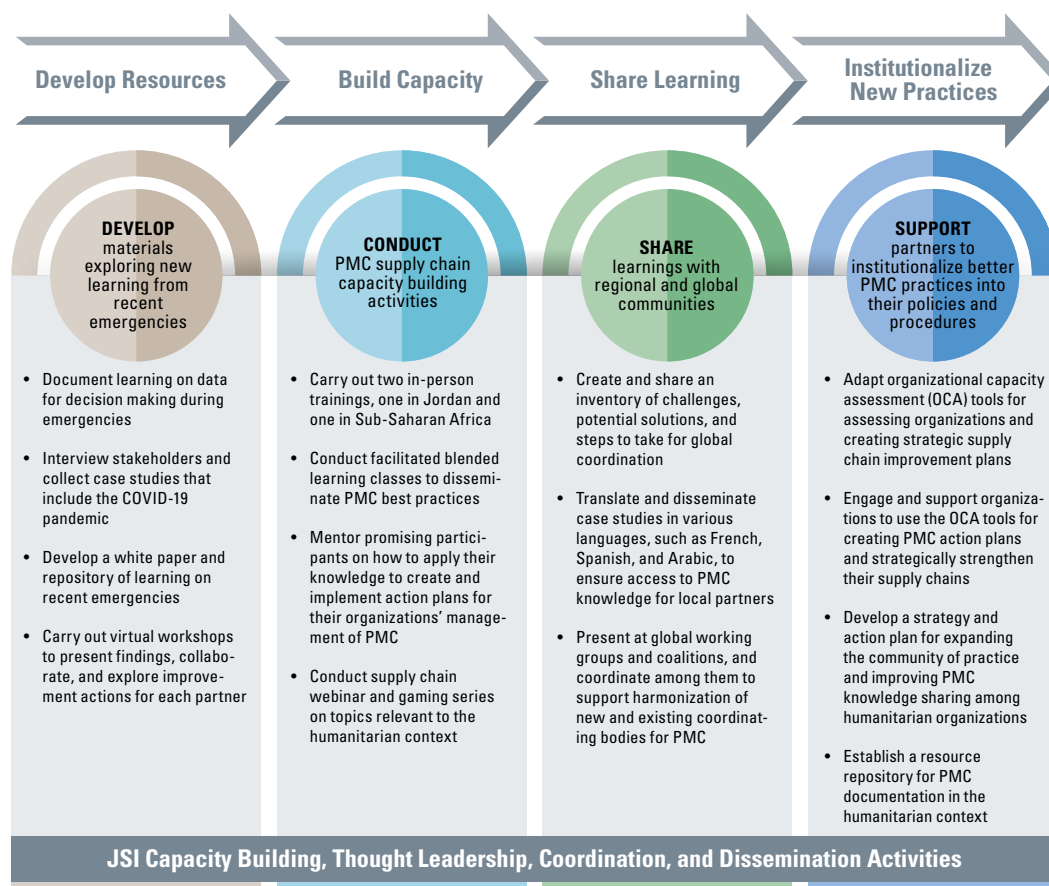
- **Develop** material that explores new approaches and learning from recent emergencies in PMC management.
- **Conduct** PMC supply chain capacity building activities.
- **Share** learnings with regional and global communities, including materials in multiple languages.
- **Support** partners to review their strategic investments in supply chain, and conduct organizational strengthening activities to improve their PMC management practices.

Under the previous project, BHA implementing partners increased their capacity in PMC management through multiple activities, including in-person training, webinars, and a series of blended learning courses, as well as videos and briefs designed to promote promising practices in supply chain management for humanitarian settings ([see project achievement infographic](#)). Partner organizations made tangible progress



Source: JSI

STRATEGIC APPROACH TO BUILDING CAPACITY FOR IMPROVED PMC MANAGEMENT



Source: JSI

through the blended learning course action plans ([featured on USAID's Medium](#)) and learned from each other through a community of practice as well as the project's technical advisory group, comprised of BHA implementing partners and other key international actors managing PMC in humanitarian settings.

From 2022 to 2024, the project will expand on previous capacity building and coordination efforts, while leveraging experiences and learning from recent emergencies, including the COVID-19 pandemic. We will develop new resources and networks that will help implementing partners build resilience within their health supply chains, and we will work with humanitarian logistics staff and their organizations to help address specific needs that will improve the quality of their PMC activities.

JSI's 12-week blended learning course will continue to be a cornerstone of the project, enabling humanitarian logistics staff across the world to participate in a multi-faceted learning program with action plans that integrate capacity development into the day-to-day work of humanitarian organizations. Through in-person five-day training workshops, humanitarian logisticians who support BHA programs will have the opportunity to participate in a shorter, more intensive course. We will also continue our public access webinar series and conduct workshops to share the learning we uncover. To further institutionalize PMC management practices within humanitarian organizations, we will adapt organizational capacity assessment tools to the specific requirements of PMC in emergency settings, and we will support organizations to create strategies and action plans that strengthen their PMC supply chains.

Working with humanitarian partners, we will review and analyze barriers to quality PMC management and develop case studies and learning that support continued improvement in PMC practices and global coordination among partners in humanitarian response settings. Through our community of practice and other channels, we will disseminate learning and create networks that support and sustain humanitarian organizations working with health supply chains, enabling them to respond to people in need before, during, and after disasters.

UPCOMING LEARNING OPPORTUNITIES

- Online Blended Learning Courses
- In-person trainings in Kenya (Fall 2022) and Jordan (TBD)
- Webinars and workshops
- Participation in the [Humanitarian Commodities Logistics Community of Practice](#)

You can learn more about this program at <https://www.jsi.com/BHAHumLog>

This brief was made possible by the generous support of the American people through the United States Agency for International Development (USAID). The contents are the responsibility of JSI Research & Training Institute, Inc. (JSI) and do not necessarily reflect the views of USAID/BHA or the United States Government.