



# PROMOTING HEALTH ACROSS THE LIFE COURSE

JSI's approach is rooted in a life course perspective, which acknowledges that events that occur early in one's life greatly influence later outcomes. This perspective recognizes that social factors, such as structural racism and poverty, determine health outcomes to a greater extent than biological or behavioral factors.

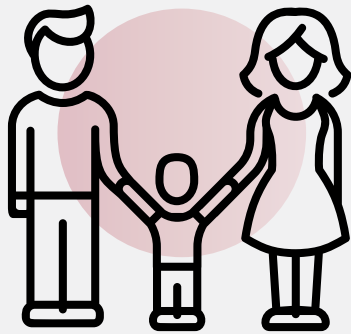
Applying a health equity lens is integral to our work to eliminate health disparities in the United States (U.S.) and achieve better health outcomes for all.

JSI Research & Training Institute, Inc. is a public health management consulting and research organization dedicated to improving the health of underserved individuals and communities across the U.S and throughout the globe.

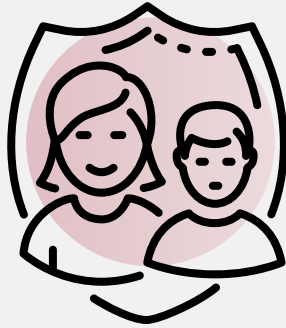
[jsi.com/LifeCourse](https://jsi.com/LifeCourse)



**JSI supports systems, organizations,  
and people to achieve better health  
outcomes for all.**



Community  
and family  
health



Adolescent  
health and  
development



Sexual and  
reproductive  
health



Infant and child  
health and  
development

# JSI's key strategies for achieving equitable and sustainable outcomes

- Center race, gender, and health equity
- Center decision-making on community experiences and identified strengths and opportunities
- Share knowledge to accelerate change
- Partner with communities in the review and interpretation of data
- Use a multi-sectoral, systems approach
- Use data-driven decision-making and continuous quality improvement



# How can JSI help you improve the health of people across the life course?



## Strategic Planning

JSI collaborates with federal, state, local agencies, and stakeholders to develop data-driven and evidence-based plans that maximize our partners' collective efforts.



## Assessments

We use a variety of methods to conduct assessments that identify assets, needs, strengths, and challenges. Our process ensures maximum transparency to improve community engagement, accountability, and data-driven recommendations to inform policy and practice.



## Training and Workforce Development

JSI is a leader in developing and delivering in-person and virtual training to health care providers, policymakers, and community-based organizations.



## Communication and Dissemination

We design messages, materials, and campaigns that educate audiences and support solutions to our nation's most challenging health issues.



## Technical Assistance

JSI provides tailored, relationship-based support to organizations, helping them to overcome underlying challenges, implement recommendations, and improve policies and practices.



## Policy Development and Implementation

We convene diverse stakeholders, review the literature on best practices, and facilitate participatory processes to develop policy recommendations that reflect and respond to a range of stakeholder experiences.



## Evaluation and Quality Improvement

JSI designs and conducts qualitative, quantitative, and mixed-method evaluations. We are committed to strengthening programs by using evaluation data for continuous quality improvement.





# Select projects

## Identifying and selecting priority needs

JSI has been contracted to conduct components of various states' Title V comprehensive needs assessments to identify and select the priority needs for the state and guide the Maternal and Child Health (MCH) Block Grant activities.



### Supporting Title X and Teen Pregnancy Prevention Grantees

For over 40 years, JSI has been funded by the federal Office of Population Affairs. JSI currently provides capacity-building support to Title X and Teen Pregnancy Prevention grantees to strengthen their networks across a range of sexual and reproductive health topics, with a focus on translating research into practice.



### Strengthening Family Support Services from Pregnancy Through Early Childhood

JSI collaborates with the New Hampshire Maternal Infant and Early Childhood (MIECHV) program to provide training and technical assistance for local implementing agencies (LIAs). JSI also provides support for continuous quality improvement projects. This project is supported by the Health Resources and Services Administration (HRSA) of the U.S. Department of Health and Human Services.





# Our clients

Since our inception in 1978, JSI has supported our partners in improving health across the life course. Clients include:

- Centers for Disease Control and Prevention
  - Department of Health and Human Services (Office of Adolescent Health, Office of Population Affairs, Office on Women's Health, Office of Disease Prevention and Health Promotion)
  - Health Resources and Services Administration (HIV/AIDS Bureau, Maternal and Child Health Bureau, Bureau of Primary Health Care)
- State and local health departments
- Health care providers including federally qualified health centers, hospitals, and family planning providers
- Health foundations
- National and community-based organizations





For more information visit

[jsi.com/lifecourse](http://jsi.com/lifecourse)

Follow us

[twitter/JSIHealth\\_US](https://twitter.com/JSIHealth_US)

Email us

[hsd-wcf@jsi.com](mailto:hsd-wcf@jsi.com)