



Health-at-a-Glance City Profile

Indore

City Profile

Indore is the largest city in Madhya Pradesh, and is the state's commercial capital. It is also one of the fastest-growing cities in India, with a population of just under 3 million in 2019 and a 10-year growth rate of about 3.6 percent.¹ As its population has grown, so has the number of slum dwellers, who make up an estimated 30 percent of the total city population.²

As per BHC's 2018 Health Needs Assessment, Indore has 313 public and private hospitals, including two tertiary care facilities. Secondary public care is provided via the district hospital and four community health centers.³ Primary public care is provided by 14 urban primary health centers (UPHCs) that are often located close to slum areas. UPHCs are supported by 760 Anganwadi centers, which target pregnant and lactating women, pre-school children, and adolescents. There is a proliferation of private providers as well; according to staff in the office of the Chief Medical and Health Officer, 209 private hospitals and 59 clinics (called nursing homes) also serve Indore.

References:

1. Indore, India Population 1950-2020. Data from UN World Population Prospects 2019, via www.macrotrends.net. Retrieved 2020-03-30.
2. Indore Municipal Corporation (IMC). 2019. Status Review of Housing for All. Indore, India: IMC.
3. Pomeroy-Stevens, Amanda, Monica Biradavolu, Damodar Bachani, Fareed Uddin, and Neha Yadav. 2018. "Building Healthy Cities Indore Health Needs Assessment." Arlington, VA: Building Healthy Cities (BHC) project.

Child Health

Children under 5 years who are stunted (height-for-age), 2018-2019

39%

Children under one year receiving full immunization, 2018-2019

99%

Source: Data shared in February 2020 by District Program Management Unit, National Health Mission, Department of Health & Family Welfare, Indore.

Indore

Maternal Health

Percent of pregnant women receiving any antenatal care (ANC) coverage, 2018-2019



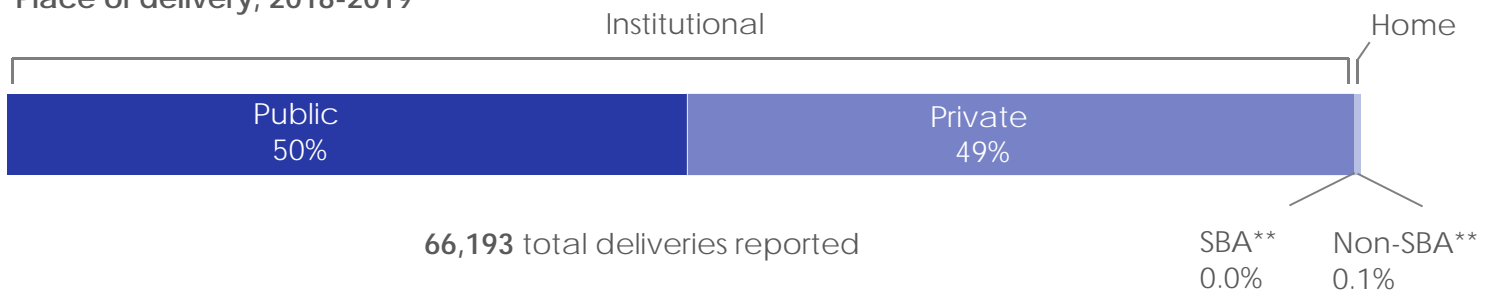
Percent of pregnant women who received 4 or more ANC visits, 2018-2019



Maternal deaths, 2018-2019



Place of delivery, 2018-2019



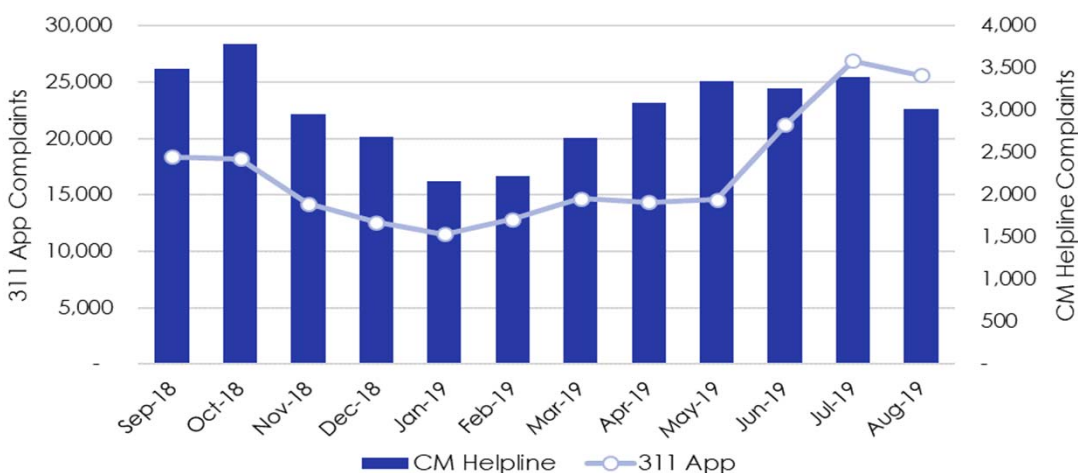
*Calculated as per Demographic and Health Survey reference sheets, based on reported maternal deaths

**Skilled birth attendant

Source: Health Bulletin - April to March 2019 http://www.nhmmp.gov.in/WebContent/HMIS/Y/Bulletin_AprilToMarch_2018_19.pdf

Citizen Reporting Systems (CRS)

Total monthly complaints for all sectors, CM Helpline and 311 App, 2018-2019



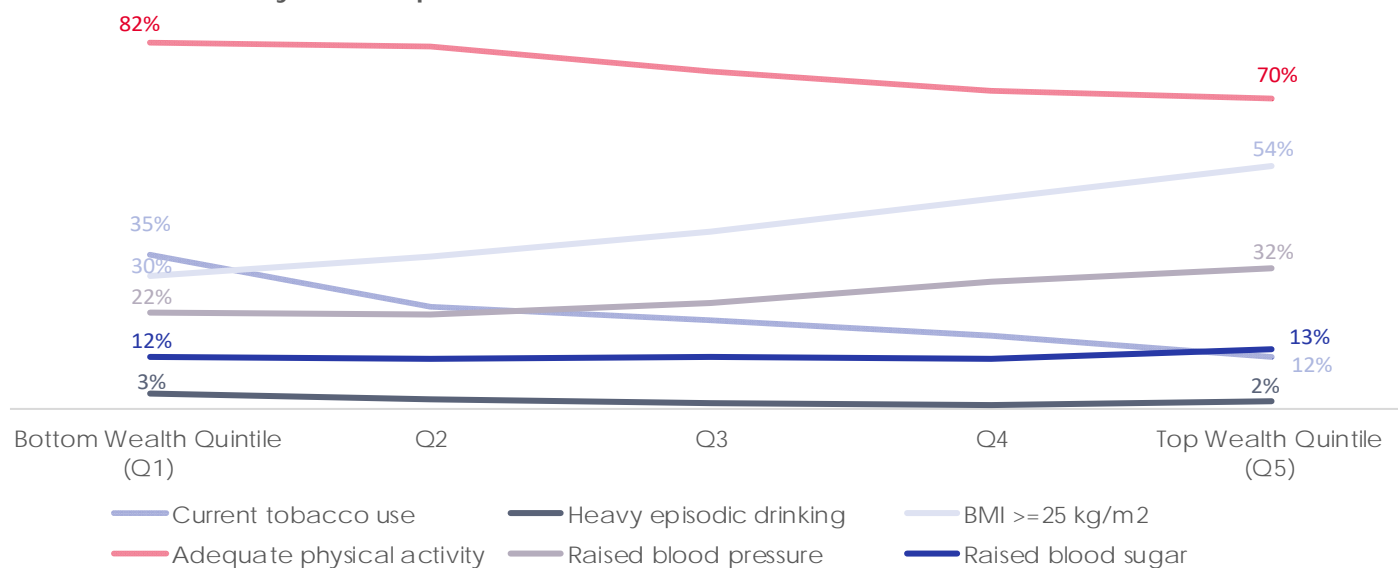
BHC conducted CRS market research in April – June 2019 and found that complaints related to health made up 15–25% of the total and were the least likely to be resolved. BHC is supporting Indore to improve these resolution rates.

Source: Memon et al. 2020. "Assessment Report on Citizen Reporting Systems in Indore City." Arlington, VA: Building Healthy Cities (BHC) project.

Indore

Noncommunicable Disease Risk Factors

Prevalence of risk by wealth quintile, 2018



Source: 2018 ISCDL/BHC NCD Survey Dataset

Trauma

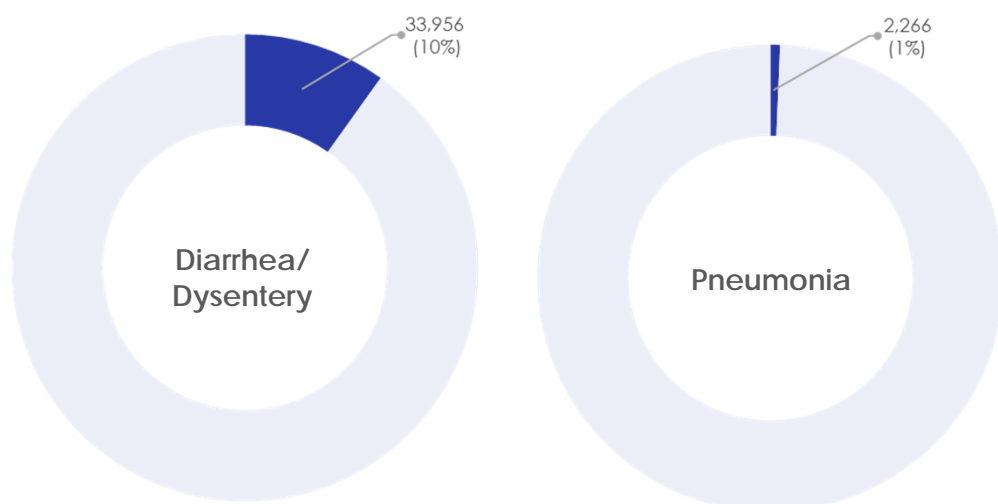
Road deaths reported by age group, 2018



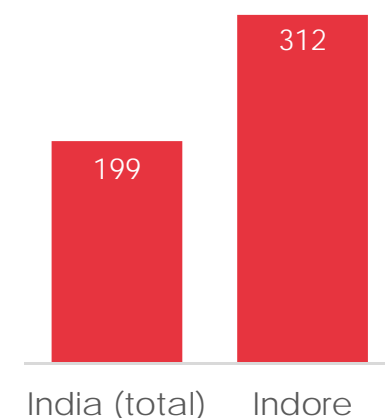
Source: Accident Cell, Traffic Department, Indore, April 2019.

Communicable Disease

Prevalence of diarrhea/dysentery and pneumonia, 0-5 years of age, 2018 – 2019



Incidence of tuberculosis per 100,000, 2019

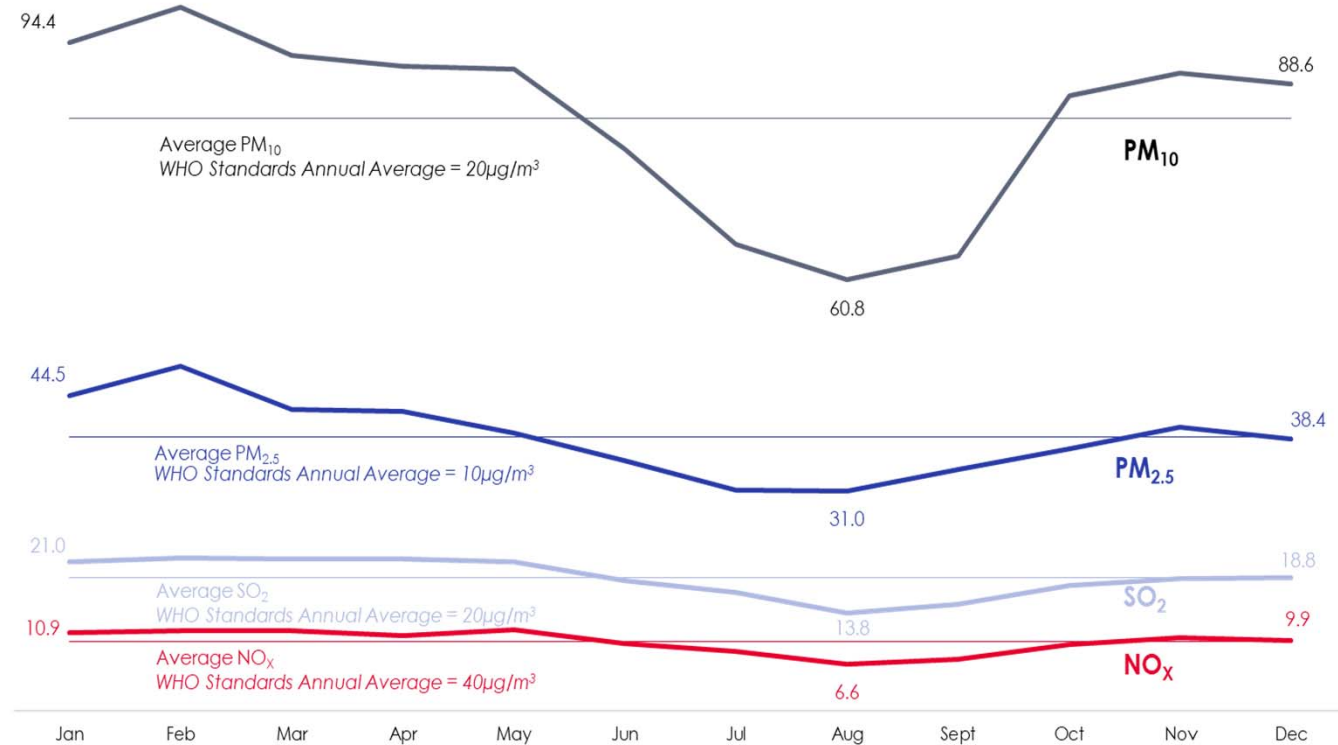


Source: Data shared in February 2020 by District Program Management Unit, National Health Mission, Department of Health & Family Welfare, Indore.

Indore

Environmental Health

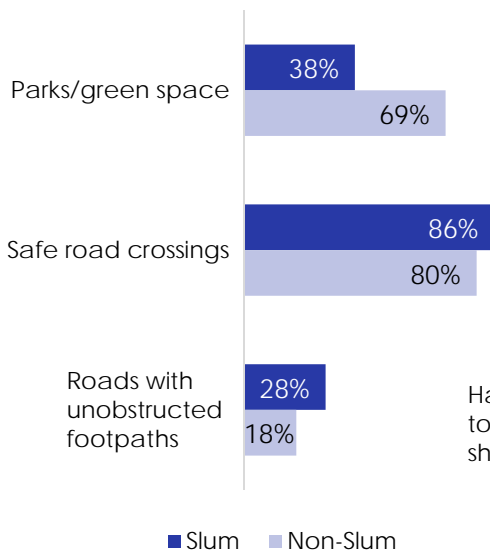
Monthly concentration of air pollutants, 2018



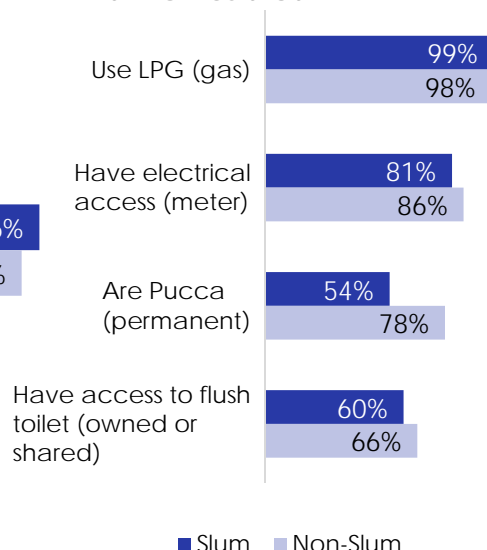
Source: Madhya Pradesh Pollution Control Board, Indore, shared April 2019; WHO Air quality guidelines for particulate matter, ozone, nitrogen dioxide and sulfur dioxide: Global update 2005; Summary of risk assessment, 2006.

Basic Services

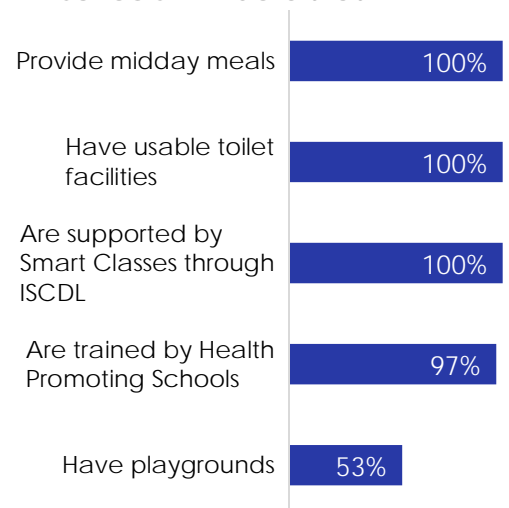
Percent of neighborhoods in Indore with:



Percent of Indore population with homes that:



Percent of government schools in Indore that: ***



***Each indicator targets a different school level (primary schools – higher secondary).

Source: 2018 ISCDL/BHC NCD Survey Dataset

Source: 2018 ISCDL/BHC NCD Survey Dataset

Source: 2019 data shared in March 2020 by DPC, SSA, Education Department, Indore.