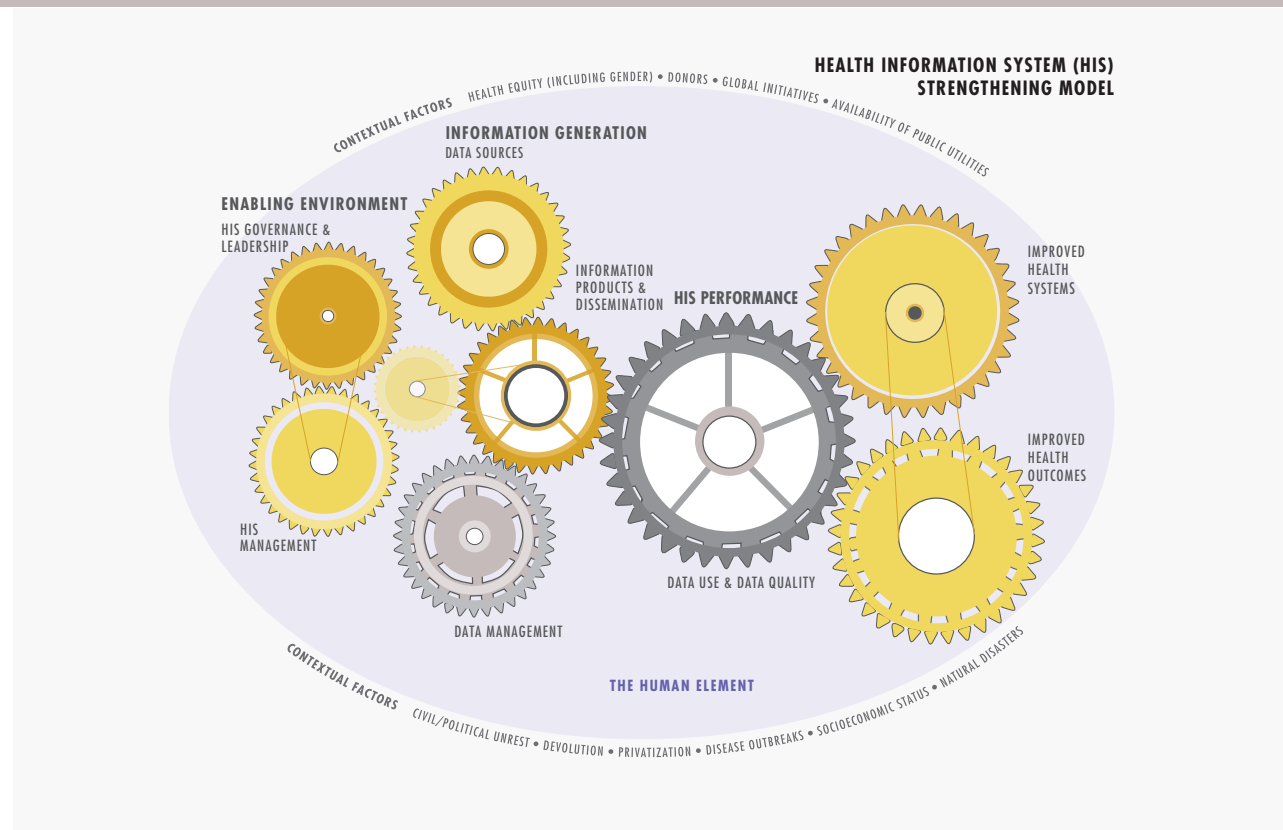


Strengthening Health Information Systems in Madagascar

Madagascar's health information system (HIS) has faced challenges resulting from multiple vertical reporting systems and disease-surveillance systems that correspond to program-specific needs. In working toward a more unified HIS, Madagascar's Ministry of Health (MOH) has been collaborating with partners, such as the Directorate for Malaria Control (DLP), to integrate reporting systems, reduce reporting redundancies, and address issues related to data quality. As part of this effort, MEASURE Evaluation, funded by the United States Agency for International Development, has been supporting the development and implementation of an electronic health information system (HIS) to improve the availability and use of high-quality health data.

MEASURE Evaluation's involvement in the MOH's efforts to improve the performance of Madagascar's HIS have strengthened the "enabling environment" and "information generation" areas of the HIS, identified in MEASURE Evaluation's Health Information System Strengthening Model (HISSM) shown at right:

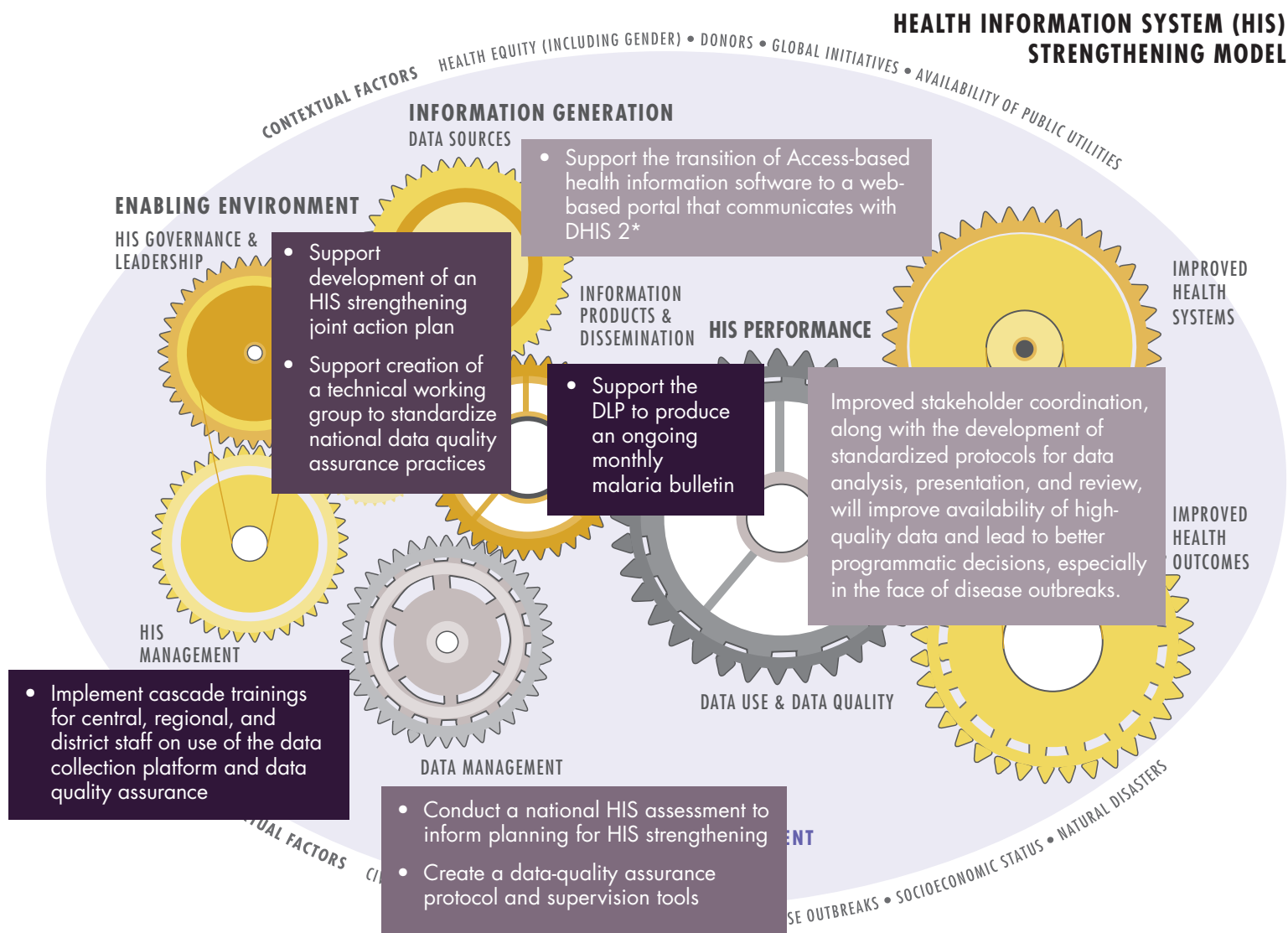
For example, our work with governmental and nongovernmental stakeholders to develop a roadmap and joint plan of action for national HIS strengthening contributed to the country's enabling environment for a strong HIS. The use of our Performance of Routine Information System Monitoring (PRISM) toolkit to assess the country's routine health information system and integrated disease surveillance system has served to



strengthen Madagascar's information generation area.

The illustration on the following page superimposes on the HISSM depictions of MEASURE Evaluation's activities in the enabling environment and information generation areas to support coordination of vertical information systems and harmonization of data

collection. By displaying key interventions across the model, we see their strategic interaction and how this combination of interventions works together to strengthen data quality and data use at all levels of the health system.



The table lists additional MEASURE Evaluation activities that support HIS strengthening in Madagascar. We expect all of these interventions to improve the quality of the HIS data collected and increase the use of those data to generate health indicators and statistics, identify trends, and expand data-informed decision making. We will update this table in 2018.

MEASURE Evaluation's Other HIS Strengthening Work in Madagascar			
HISSM areas	HISSM subareas (gears)	Health information system strengthening activities	
		2016	2017
Enabling environment	HIS governance and leadership	<ul style="list-style-type: none"> Help key stakeholders develop a roadmap for HIS strengthening that includes malaria surveillance and malaria monitoring and evaluation (M&E) 	<ul style="list-style-type: none"> Support the creation of a strategic plan, national guidelines, and a learning platform for building a standardized and harmonized data quality assurance system Support the development and subsequent updates of policies, guidance, standard operating procedures, a strategic plan, and national health indicators for the HIS
	HIS management		<ul style="list-style-type: none"> Conduct malaria M&E and surveillance training for central MOH and NMCP staff and regional program managers Conduct TOT for central data managers on data quality tools, guidelines, and use of web-based health information software to support cascade trainings of regional and district-level staff Develop a capacity strengthening plan for the DLP Develop a plan to create regional Centers of Excellence for malaria surveillance
Information generation	Data sources		<ul style="list-style-type: none"> Review, update, and integrate facility-based indicators in the GESIS platform (Madagascar's electronic system for data collection)
	Data management		<ul style="list-style-type: none"> Implement malaria-specific data quality assurance protocols Conduct regular data quality audits to comply with national guidelines Develop supervision tools and supporting data managers to coach and supervise community health workers on the collection, reporting, and use of community HIS data Train data managers on the use of Excel, Access, and other statistical applications