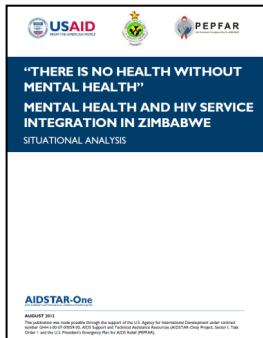




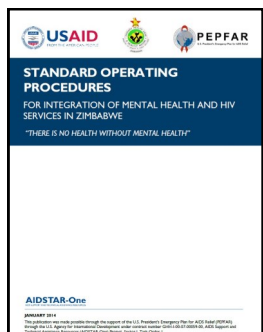
Addressing the Mental Health Needs of Vulnerable Populations Globally



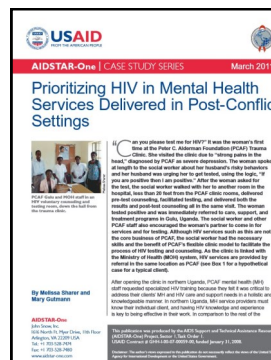
Highlights mental health and HIV systems in Zimbabwe and provides policy and program guidance for mental health and HIV integration. Available at: <https://aidsfree.usaid.gov/>



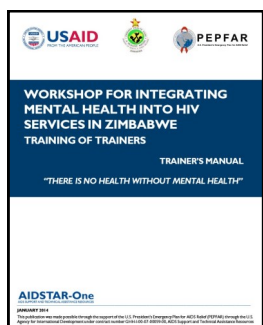
This case study presents two innovative pilot programs in Vietnam that address the mental health needs of PLWH. The first integrated MH services into a methadone maintenance treatment program and the second embedded MH services in an HIV outpatient care and treatment clinic at a district general hospital. Available at: <https://aidsfree.usaid.gov/>



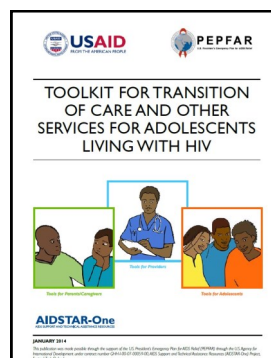
The Standard Operating Procedures provide instruction and tools to integrate mental health and HIV services at the community level among health facilities, community based organizations and traditional healers. The SOP is based upon a 2 year pilot program in Zimbabwe. Available at: <https://aidsfree.usaid.gov/>



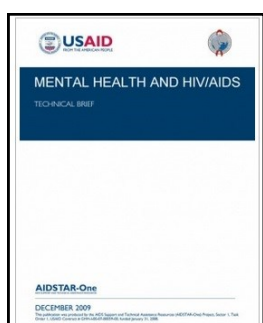
This case study provides an in-depth look at the Peter C. Alderman Foundation's (PCAF) efforts to integrate HIV services and referrals into their mental health program in the post-conflict area of Northern Uganda. Available at: <https://aidsfree.usaid.gov/>



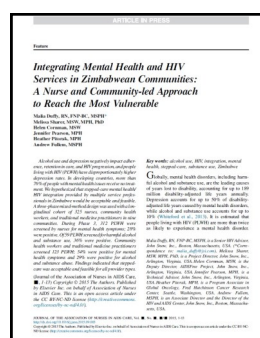
Training manual to implement mental health and HIV integration among health care providers, community health workers and traditional healers in Zimbabwe. Available at: <https://aidsfree.usaid.gov/>



The Toolkit is designed to support health and community providers, families, caregivers, and adolescents to transition from pediatric to adult care. The toolkit provides a number of clinical and psychosocial tools including mental health, psychosocial development, loss grief and bereavement, and alcohol and substance use among others. Available at: <https://aidsfree.usaid.gov/>



Highlights key mental health issues in the continuum of HIV care and reviews promising programmatic practices in resource-constrained settings. This tool provides links to resources and tools for program planners and clinicians concerned about mental health issues in HIV care and support. Available at: <https://aidsfree.usaid.gov/>



This Journal of the Association of Nurses in AIDS Care Article describes findings from a 2 year pilot program in Zimbabwe that integrated mental health and HIV services. Available at: <http://www.nursesinaidscajournal.org/article/S1055-3290%2815%2900224-1/pdf>

Addressing the Mental Health Needs of Vulnerable Populations in the United States



The Maine Health Access Foundation (MeHAF) believed in the value of integrating behavioral health and primary care services to create a more holistic, patient-centered approach to health care. To this end, MeHAF established a major, 12-year, \$14 million grant program to help transform the health system in Maine. MeHAF needed an objective analysis to ascertain that its money had the intended impact, and hired JSI.

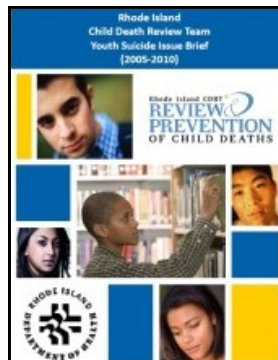
<http://www.jsi.com/JSIInternet/USHealth/results/display.cfm?ctid=na&cid=na&tid=100&id=1719>



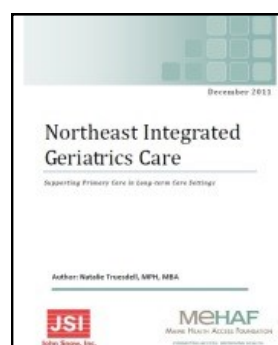
If the goal of health care organizations is better health outcomes for their clients, with mental health conditions, then patient engagement is key. Health care providers who are engaging patients consider the patients' needs, preferences and perspectives when care decisions are being made. Patient engagement leads to higher patient satisfaction and lower costs. This is a case study of patient engagement strategies. <http://www.mehaf.org/content/uploaded/images/tools-materials/integrated%20care%20case%20study%20patient%20engagement.pdf>



Post traumatic stress disorder (PTSD) symptoms are common in a substantial minority of older veterans in primary care, and careful inquiry about these symptoms is important for comprehensive assessment in geriatric populations. *Journal of the American Geriatrics Society*, Vol. 59, Issue 6, 2011, U. Nalla B. Durai, Mohit P. Chopra, Eugenie Coakley, Maria D. Llorente, JoAnn E. Kirchner, Joan M. Cook and Sue E. Levkoff.



In Rhode Island, suicide is the third-leading cause of death in youth ages 24 and younger. The Rhode Island Child Death Review Team, coordinated by JSI Research & Training Institute, Inc., conduct comprehensive reviews of deaths of children and youth age 0-to-17 in order to identify ways in which deaths from like causes might be prevented. http://www.jsi.com/JSIInternet/Inc/Common/_download_pub.cfm?id=11857&lid=3



Mental illness, dementia and other behavioral health conditions in the nursing home are well-recognized challenges in both the clinical and policy arenas. This case study describes the Northeast Integrated Geriatrics Care project which focused on changing the way mental health care is provided to elderly people, both in the nursing home and in the hospital through an integrated approach to care. <http://www.mehaf.org/content/uploaded/images/tools-materials/integrated%20care%20case%20study%20crosscare.pdf>



JSI's NH Center for Excellence is a resource center for best practices in alcohol and other drug services. JSI developed and maintains technical assistance frameworks for treatment and recovery providers and practitioners in New Hampshire. <http://www.nhcenterforexcellence.org>